



YLI ELECTRONIC

ANSI standard Heavy Duty Electric Strike

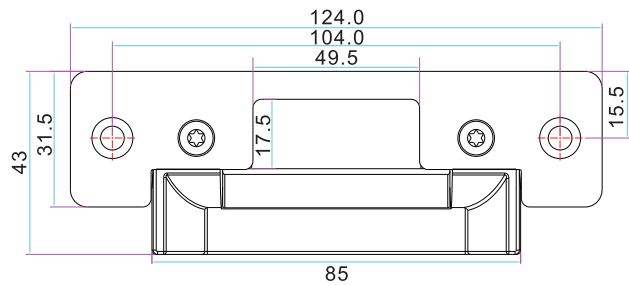


Patent: No.201320470904.1

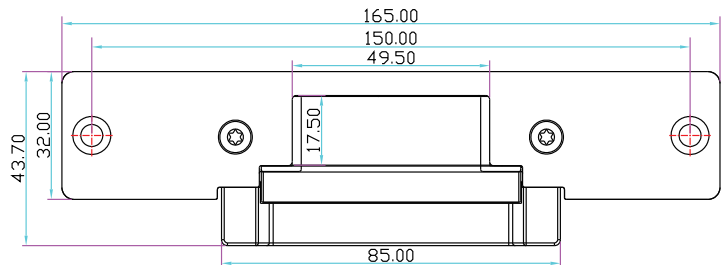
Specification

Model	Face Plate	Voltage	Current	Fail safe	Suitable for	Signal output	Weight
YS-138	124Lx43Wx35H	12VDC (24V need order)	320mA	Fail secure(NO) Fail safe(NC)	Wooden door Metal door Glass door	No	0.38kg
YS-138-S	124Lx43Wx35H	12VDC (24V need order)	320mA	Fail secure(NO) Fail safe(NC)	Wooden door Metal door Glass door	Yes	0.38kg
YS-138L	165Lx43.7Wx35H	12VDC (24V need order)	320mA	Fail secure(NO) Fail safe(NC)	Wooden door Metal door Glass door	No	0.40kg
YS-138L-S	165Lx43.7Wx35H	12VDC (24V need order)	320mA	Fail secure(NO) Fail safe(NC)	Wooden door Metal door Glass door	Yes	0.40kg
YS-138LK	250Lx43.7Wx35H	12VDC (24V need order)	320mA	Fail secure(NO) Fail safe(NC)	Wooden door Metal door Glass door	No	0.42kg
YS-138LK-S	250Lx43.7Wx35H	12VDC (24V need order)	320mA	Fail secure(NO) Fail safe(NC)	Wooden door Metal door Glass door	Yes	0.42kg
Durable design	Mechanical test: 1, 000, 000 times						

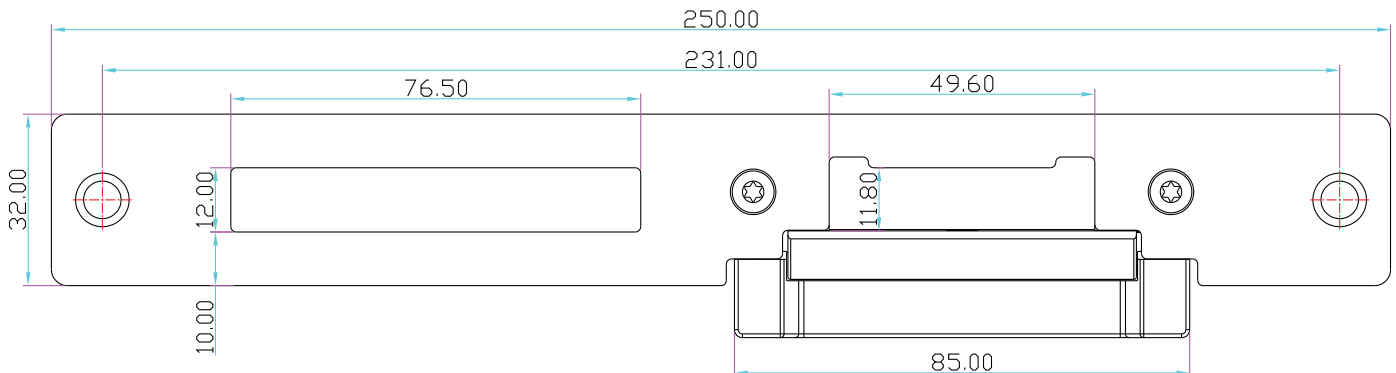
Diagram(unit:mm)



YS-138



YS-138L



YS-138LK

Signal Output

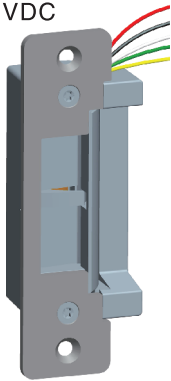
Green: NO
White: COM
Yellow: NC

Door Status

N.C. contact output : open status
N.O. contact output : closed status

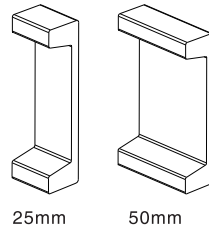
Red: +
Black: -

12VDC



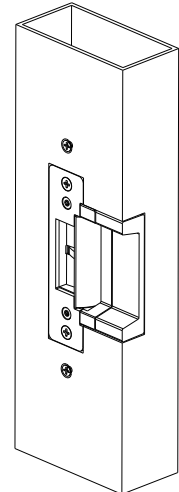
Accessories

If the door frame is too thick, please use the extension plate. Installation is as the follows.



25mm 50mm

Extension plate



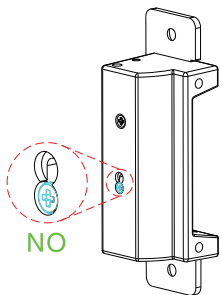
Function Conversion

You can set the operation mode of Fail Safe or Fail Secure.

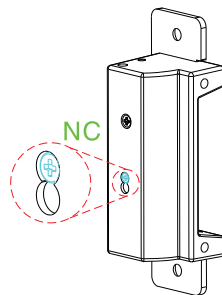
Loose the screw and tighten it in the other hole.

Fail Safe(NC): When power off, the door is in the open status.

Fail Secure(NO): When power off, the door is in the closed status.



Fail Secure

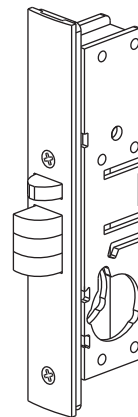


Fail Safe

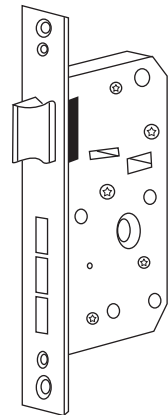
Options of Mechanical Lock

Suitable for: YS-138, YS-138L

Suitable for: YS-138LK

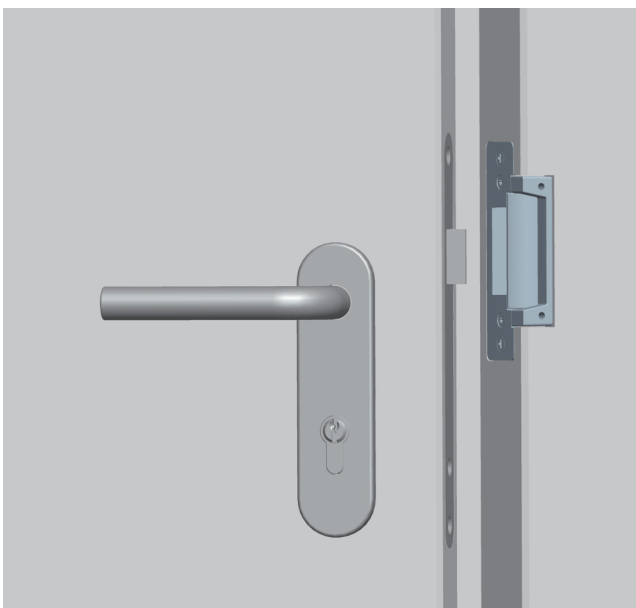


YS-305/306



YS-308

Installation Diagram



Overall Dimensions

